



Centre Line Support (Bow or Stern) Assembly Instructions

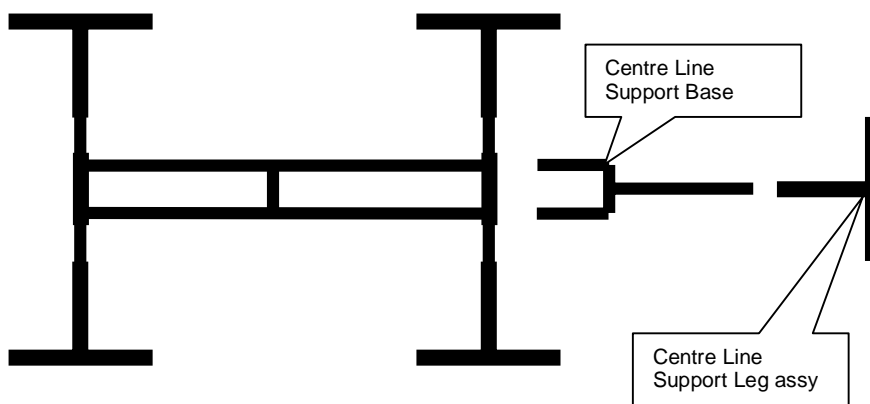
Contact

Phone 01394 420541

E mail Info@atlas-yachtcradles.co.uk

These instructions are to be read with the Cradle Assembly Instructions where one or two centre-line supports have been ordered.

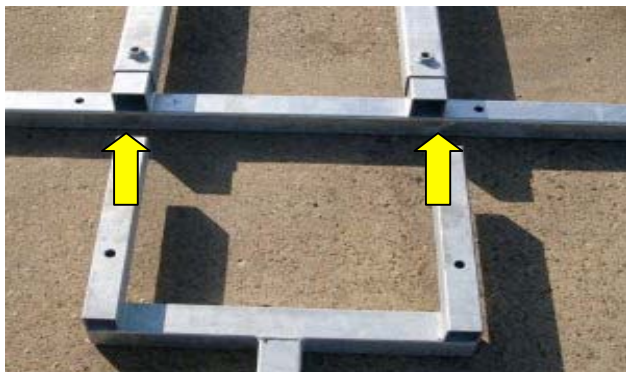
Plan of assembled base (4 leg shown)



During cradle assembly leave out the two screws that lock the base links to the end frame.

Layout the centre-line base and the centre-line leg assembly as shown (The supports can be fitted either or both ends of the cradle).

The leg base and mid leg are the same parts as are used for the side legs.



Picture shows centre line fork base being offered to the end of a cradle base.

The "forks" fit inside the base spigots (arrows). As the forks may have "splayed" during galvanising they may need easing into the spigots with a screw driver blade or similar.



Once the centre-line leg base has been pushed fully home (may need light tapping with a bulk of timber) look down through the weld nuts to check that the holes in all three components are lined up, adjust if necessary. Insert a lightly greased screw and tighten down fully – some resistance may be found as the fits are designed to be tight.



Top view when centre line base has been fitted.

The centre-line leg is assembled exactly as stages 4 – 6 of the cradle assembly instructions.



Once assembled the leg should look as shown. Unlike side legs the centre-line support leg may be set at 90 degrees to the ground. The angle between the leg base and the leg itself must never exceed 90 degrees. As with side legs the position can be adjusted fore and aft using the pre-drilled holes. Additional holes may be drilled to achieve optimum positioning of the support.



Unlike side legs the centre-line support leg comes with a jack type pad assembly to enable sensitive adjustment of the load taken by the leg. The pad should be adjusted to provide support without lifting the boat at all. The height is adjustable from 1.4 up to 2 m using the inner tube and the pin. For the lowest setting (shown) the pin is not used. Note the position of the washer. The pad assy is shipped with washer above the nut to avoid loss.

Refer to main cradle assembly and set up instructions for next steps.

If your cradle is being assembled by yard personnel (or any other person) please ensure these instructions are made available to them.

In all cases laying up of yachts ashore must be done by competent persons.